

# chris hamriding

lettings & estate agents



## 27 Thistle Way, Congleton, CW12 4EJ

### Offers In The Region Of £650,000

You will love this fabulous home from the moment you lay eyes on it so take a few moments to watch our guided video tour, it's absolutely stunning!

Tucked away in the corner of an exclusive cul de sac with the most amazing countryside views, this beautiful property has been impressively extended since it was first constructed and the upgrades have further enhanced an already fabulous home! The kerb appeal is huge and the pretty house offers a brilliant lifestyle for families from the moment you enter into the welcoming entrance hall. From this hallway you can access the luxurious lounge, the snug/dining room, guest cloakroom (with utility store) and the show-stopping social kitchen that's sure to be the hub of this gorgeous home with its recently added orangery and bifolding doors accessing the incredible private gardens! Moving up to the first floor finds you on a stylish galleried landing that gives access to all five double bedrooms, two luxury en suites and the family bathroom. The layout is so family friendly and could suit families of all ages very well indeed. The gardens are an absolute triumph and must be seen to be believed!!

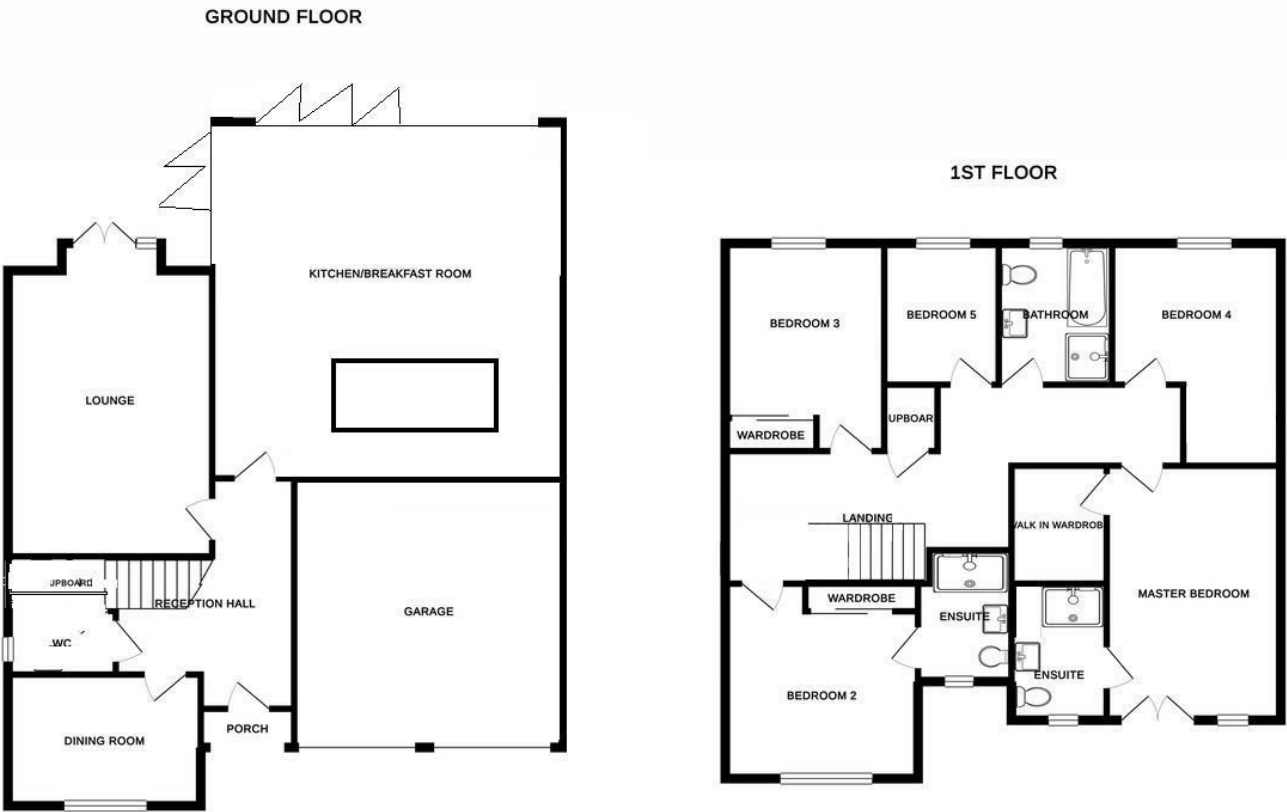
The specification throughout is luxurious and of the highest quality and the presentation is breathtaking, we cannot stress enough how clean this home is! A true credit to the current owner.

Locally, the immediate area sits perfectly between the useful facilities of Congleton town centre and miles of beautiful Cheshire countryside. Great schools and commuter links are on your doorstep and therefore we feel this truly is the perfect family upsize so read on to find out more, view our video, photos and floor plan then call us here at Chris Hamriding Estate Agents to book yourself that all important viewing!

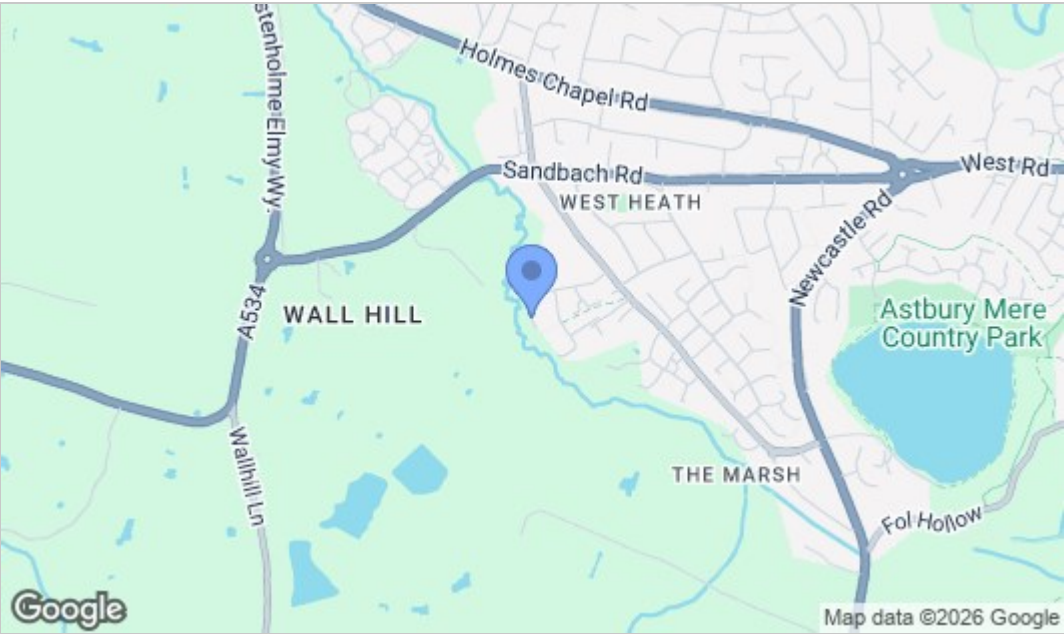




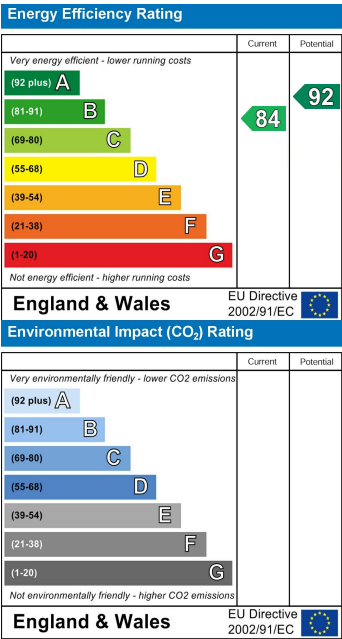
Floor Plan



Area Map



Energy Efficiency Graph



NOTICE Chris Hamriding Lettings & Estate Agents for themselves and for the vendor or lessors of this property whose agents they are given notice that: (i) the particulars are set out as a general outline only for the guidance of intending purchasers or lessees, and do not constitute, nor constitute part of, an offer of contract, (ii), all descriptions, dimensions, references to condition and necessary permissions for use and occupation, and other details are given in good faith and are believed to be correct but any intending purchasers or tenants should not rely on them as statement or representation of fact but must satisfy themselves by inspection or otherwise as to the correctness of each of them, (iii) no person in the employment of Chris Hamriding Lettings & Estate Agents has any authority to make or give any representation or warranty whatever in relation to this property.